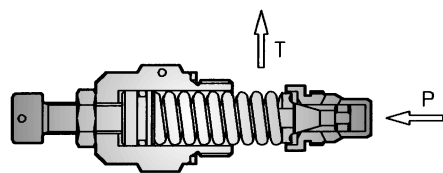
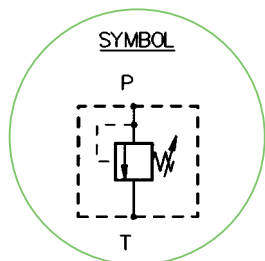


DIRECTLY OPERATED PRESSURE RELIEF VALVE

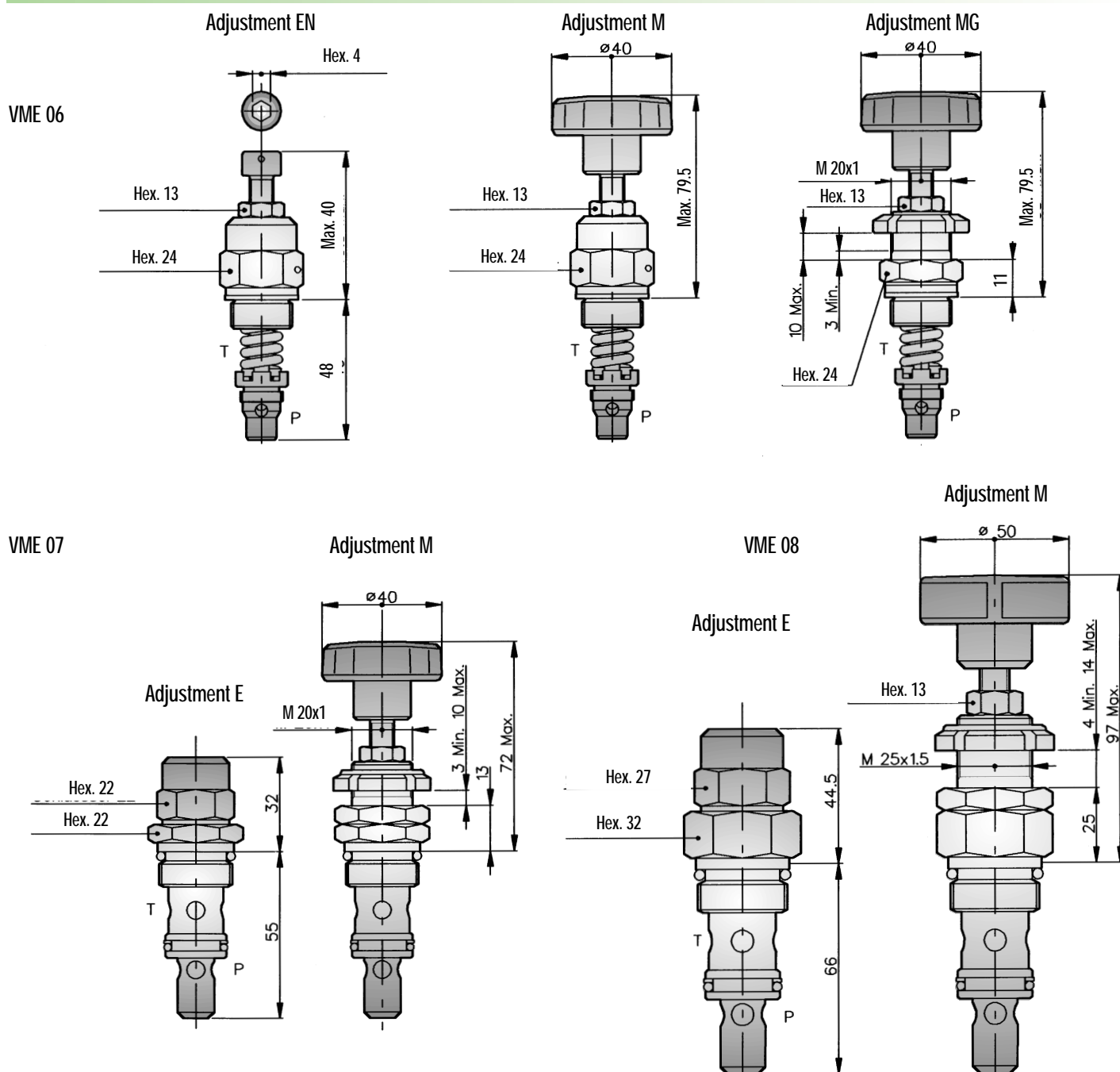
Types VME 06-07-08



SIZE		06	07	08
NOMINAL PORT SIZE		7	7	8
MAX FLOW RATE	l/min	40	50	80
	US gpm	10.5	13	21
MAX PRESSURE	bar	315	315	315
	psi	4500	4500	4500
MAX TIGHTENING TORQUE	Nm	30	60	60
WEIGHT Kg	CARTRIDGE ONLY		0.13	0.20
	WITH HOUSING	DG	0.33	0.47
		LG	0.36	0.54
CAVITY NUMBER		.0095	030	010

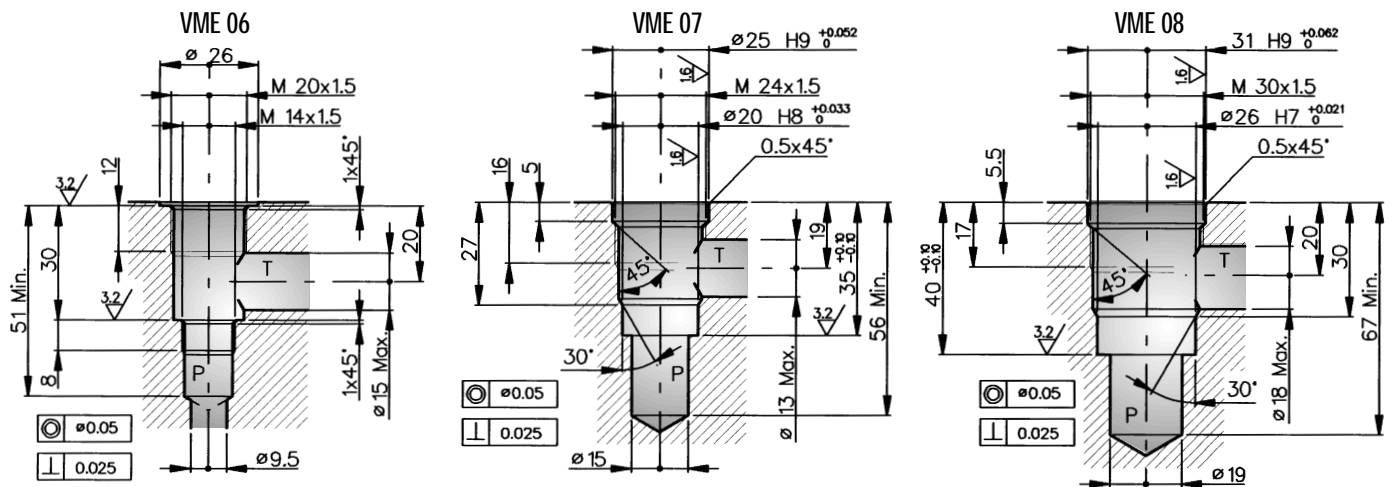
NOTE: Presetting these valves is allowed only when supplied assembled along with their housing.

DIMENSIONS (mm)



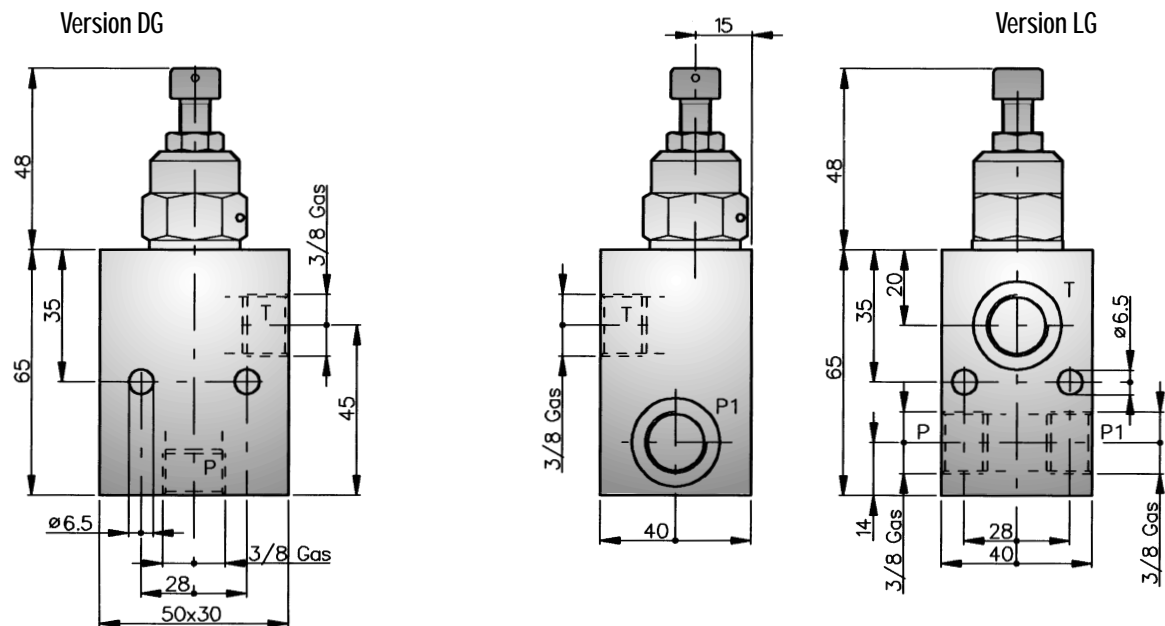
DIMENSIONS (mm)

NORMALIZED CAVITIES



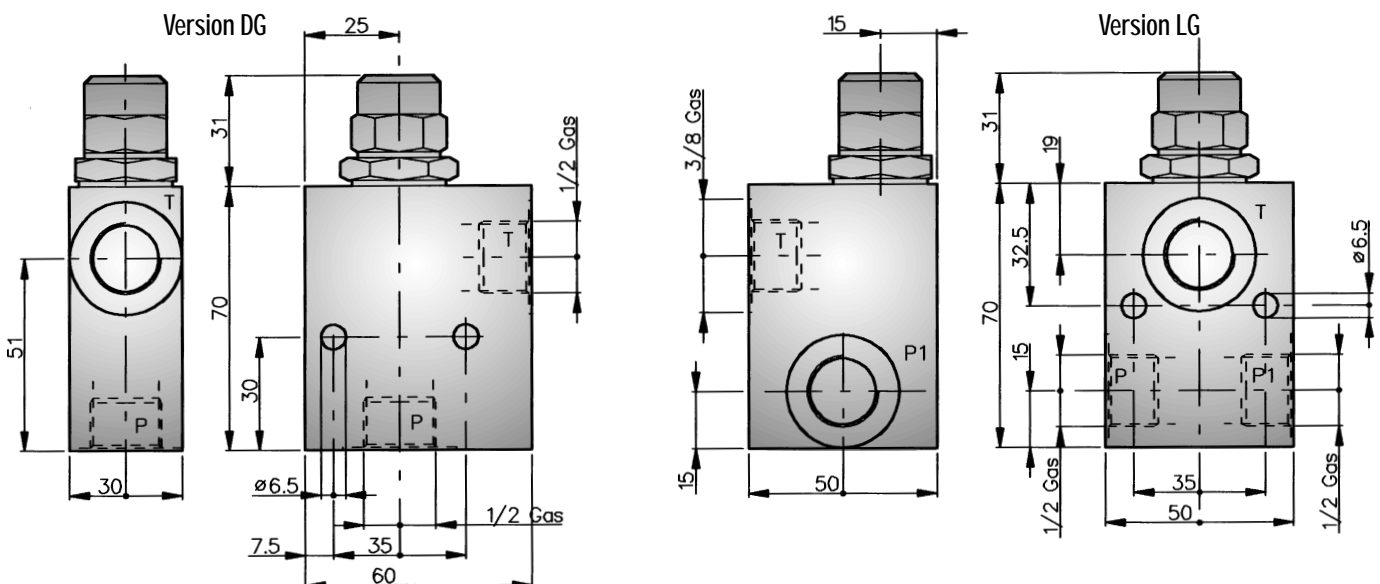
DIMENSIONS (mm)

HOUSING FOR VME 06



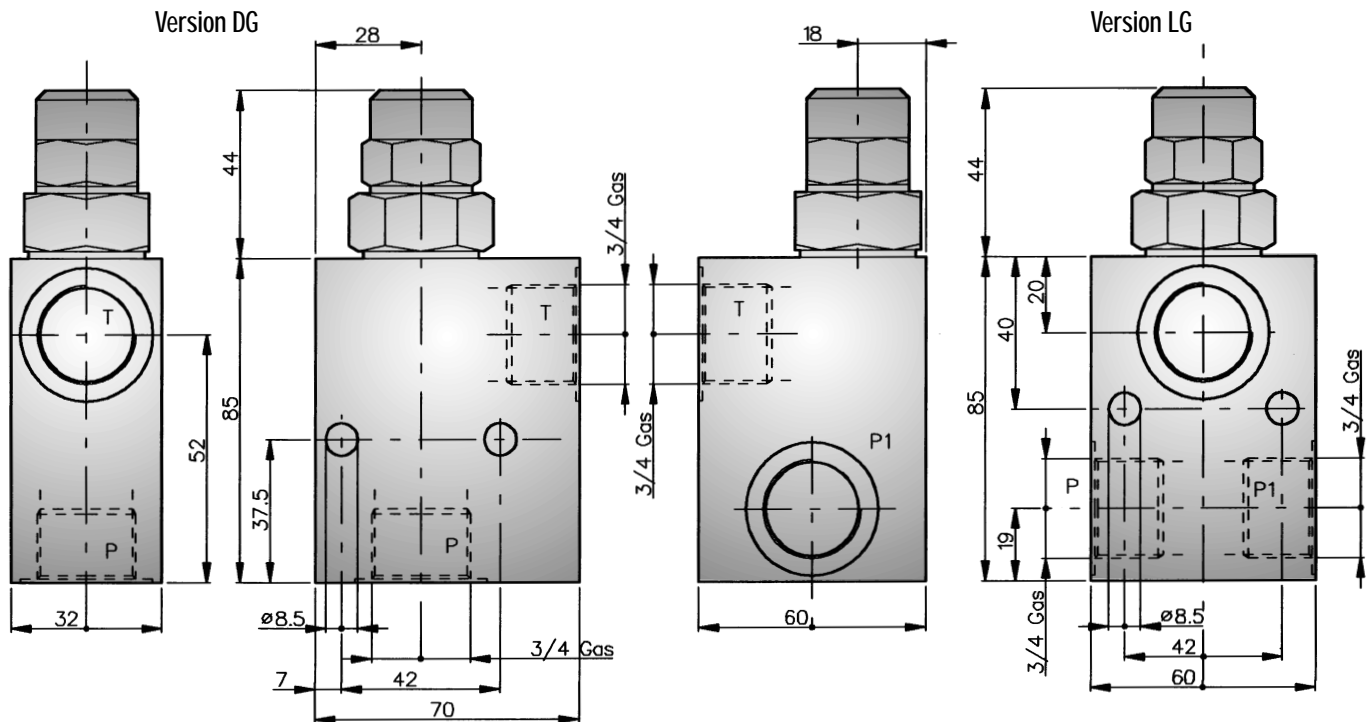
DIMENSIONS (mm)

HOUSING FOR VME 07



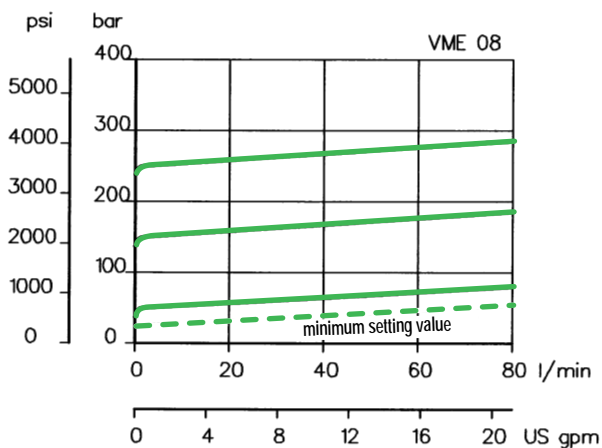
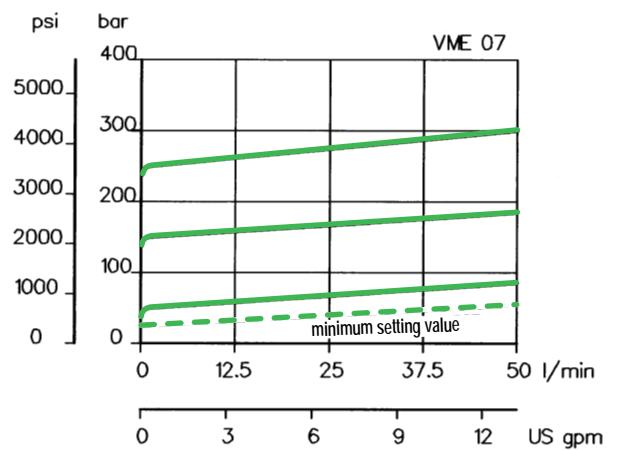
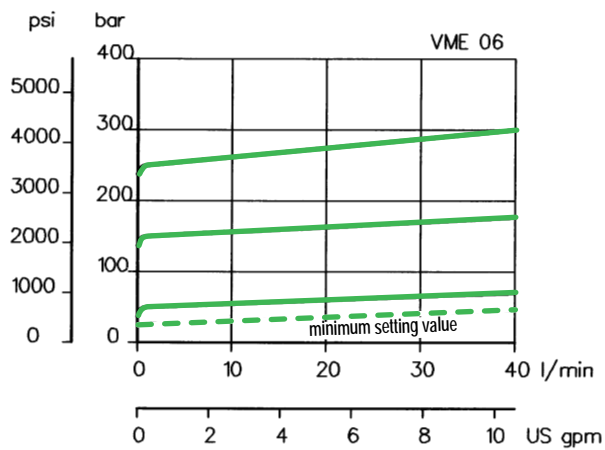
DIMENSIONS (mm)

HOUSING FOR VME 08



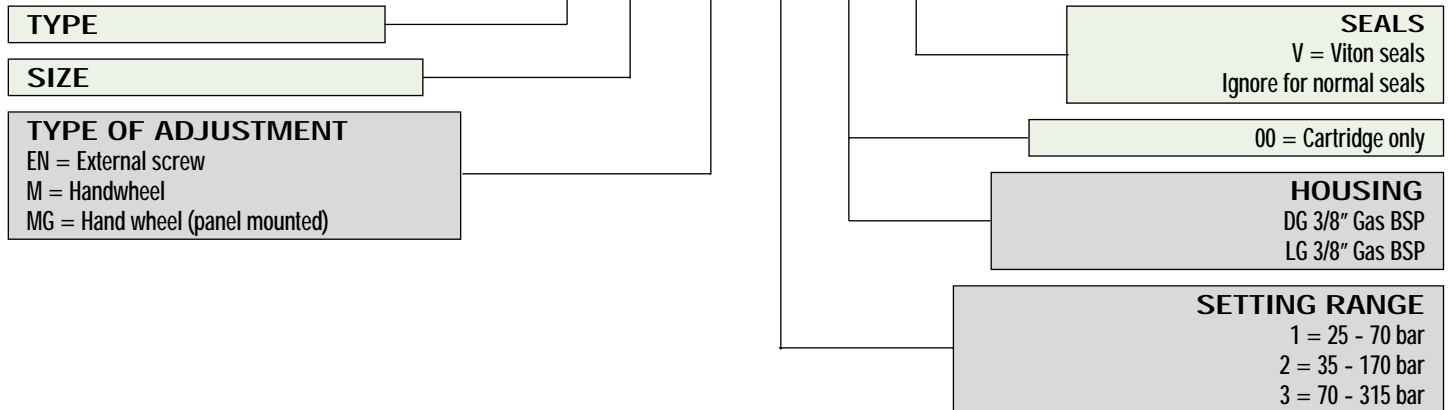
CHARACTERISTIC OPERATING CURVES

Measurements effected at 20°C ambient temperature with mineral oil having viscosity of 26 cSt at 50°C. With housing DG.



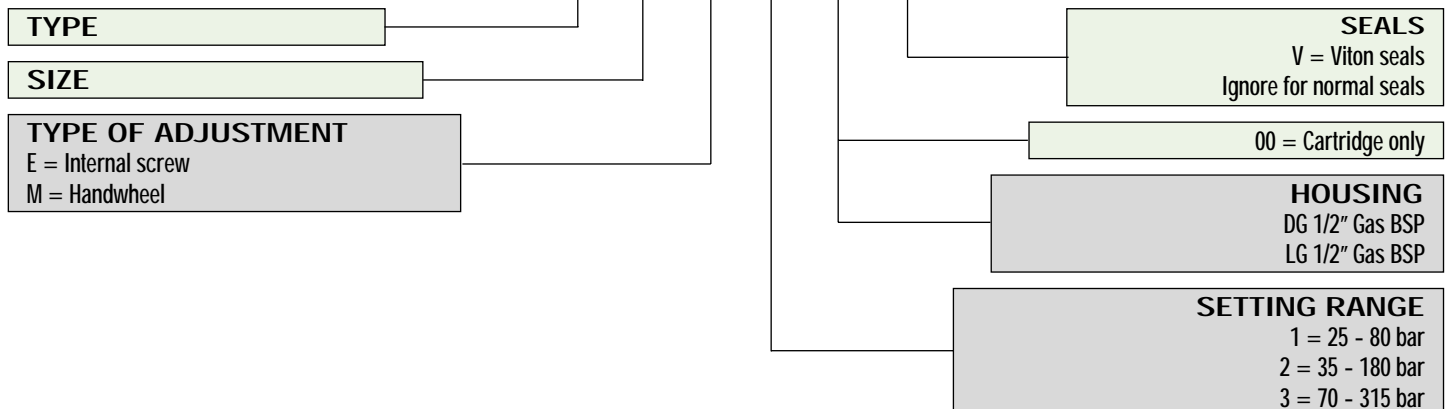
EXAMPLE OF DESIGNATION VME 06

VME 06 / EN - 2 - 00 - V



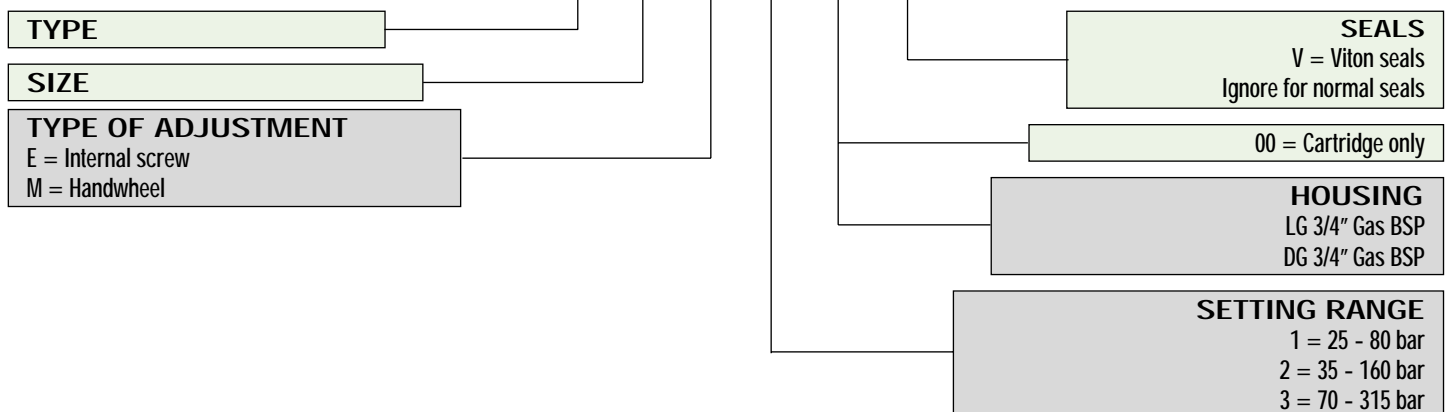
EXAMPLE OF DESIGNATION VME 07

VME 07 / E - 2 - 00 - V



EXAMPLE OF DESIGNATION VME 08

VME 08 / E - 2 - 00 - V



SPARE PARTS

SPRING ORDER NUMBERS VME 06

Type 1 = 81.62.003.1.4
 Type 2 = 81.62.004.1.4
 Type 3 = 81.62.045.1.3

SPRING ORDER NUMBERS VME 07

Type 1 = 81.62.003.1.4
 Type 2 = 81.62.004.1.4
 Type 3 = 81.62.045.1.3

SPRING ORDER NUMBERS VME 08

Type 1 = 81.62.008.1.9
 Type 2 = 81.62.009.1.9
 Type 3 = 81.62.010.1.9