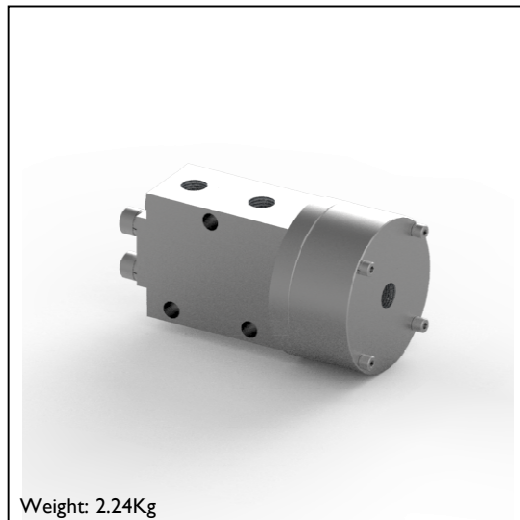
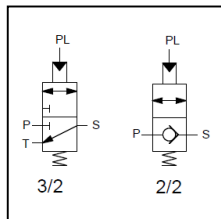
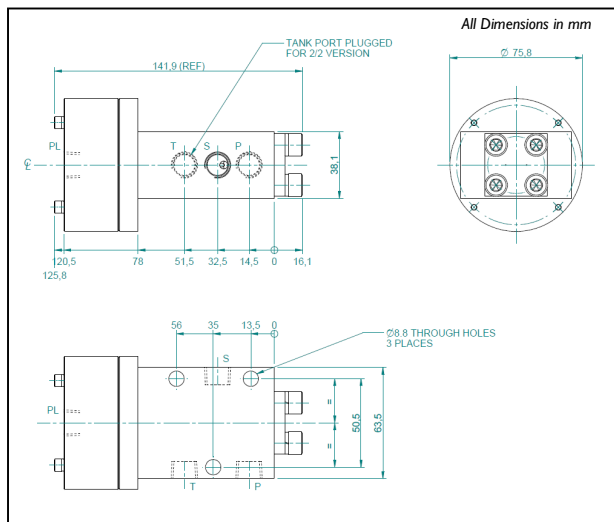


Rendering



FP15	Interface Valve	Model Code
LI	10 bar Max Pilot Pressure, 414 bar Max Valve Pressure, 15 litres per min	Operating Pressure
04	1/4 body ported	Connections
32	3 - way, 2 - position	Configuration
V	Viton -20°C to +180°C	O-ring Material
	Standard	Material Option
	NPT Ports	Thread Form
FP15 /LI /04 /32 /V		Model Number