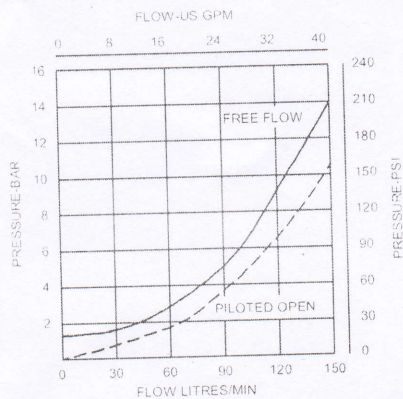
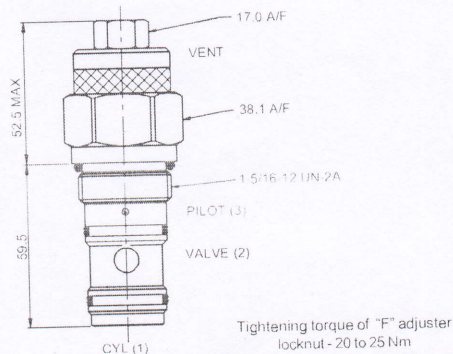


PRESSURE DROP



CARTRIDGE ONLY

BASIC CODE: 1CEB120



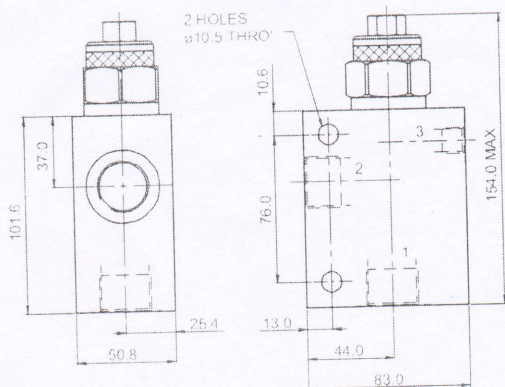
SINGLE VALVE

3/4" 1" PORTS

BASIC CODE: 1CEB150

Body ONLY part numbers

BSP aluminium 3/4" B6898	SAE aluminium 3/4" BA200 1" B10708	BSP steel 3/4" B5544	SAE steel 1" B11814
-----------------------------	--	-------------------------	------------------------



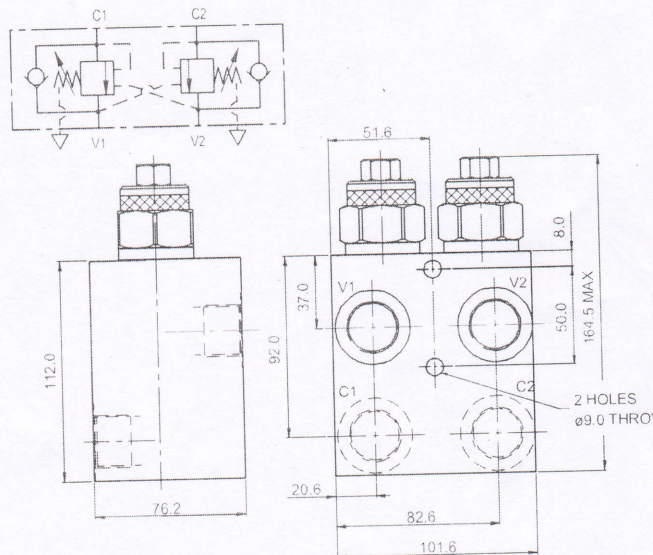
DUAL VALVE

3/4" PORTS

BASIC CODE: 1CEEB150 (INTERNALLY CROSSPILOTED)

Body ONLY part numbers

BSP aluminium 3/4" C2543	SAE aluminium 3/4" C10629	BSP steel 3/4" C1200	SAE steel 3/4" C16434
-----------------------------	------------------------------	-------------------------	--------------------------



Where measurements are critical request certified drawings

ORDERING CODE EXAMPLE

Basic Code	1CE*****	P	6W	35	S	3	Pilot Ratio
1CEB120	= Cartridge Only						3 = 3:1 (Standard)
1CEB150	= Cartridge and Body						8 = 8:1
1CEEB150	= Cartridges and Dual Body						
Adjustment Means							Seals
P = Leakproof Screw Adjustment							S = Nitrile (For use with most industrial hydraulic oils)
Port Sizes - Bodied Valves Only							SV = Viton (For high temperature and most special fluid applications)
6W = 3/4" BSP Valve & Cyl Port. 1/4" BSP Pilot Port							P = Polyurethane/Nitrile (For arduous applications)
12T = 3/4" SAE Valve & Cyl Port. 1/4" SAE Pilot Port							
16T = 1" SAE Valve & Cyl Port. 1/4" SAE Pilot Port							
Pressure Range @ 4.8 l/min							
35 = 70-350 bar. Std setting 210 bar							
Std setting made at 4.8 litres/min							

We reserve the right to change specifications without notice