

SIGNALING UNITS

series
DP - DFP

Protection	Gas	Zone	1-2	II2G	Ex d IIC or IIB+H ₂ Gb
	Dusts	Zone	21-22	II2D	Ex tb IIIC Db

Grade of Protection	IP 66
---------------------	-------

Amb. Temp.	Standard Extended	-20°C -50°C	+40°C +80°C



Standards and Certificates



94/9/CE ATEX Directive

EN 60079-0 • EN 60079-1 • EN 60079-31

U INERIS 14 ATEX 9009U



IEC 60079-0 • IEC 60079-1 • IEC 60079-31

IECEx INE 14.0023U

- For COELBO enclosures Series CCA - CCF (see section B)
- The 1/2" Series for its compact size allows to reduce the overall dimensions of the enclosures where they are mounted
- Body in Zinc plated Brass
- Ring nuts in Chrome plated Brass and/or Polycarbonate
- Drive shafts in Stainless Steel
- Optical components in tempered glass
- Colored filters in self-extinguishing polycarbonate

Options

- LED light (series LD...)

- Incandescence Lamp (series LI...)

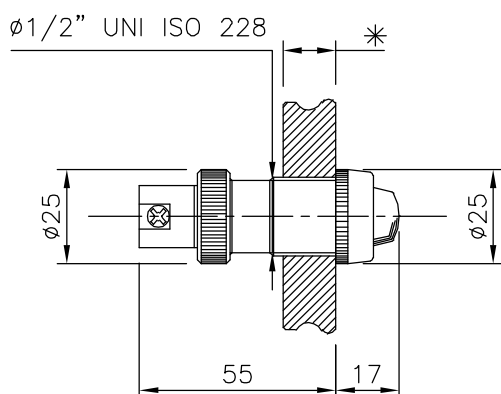
NOTES

The control and signaling units get same temperature class as the housing on which they are mounted.

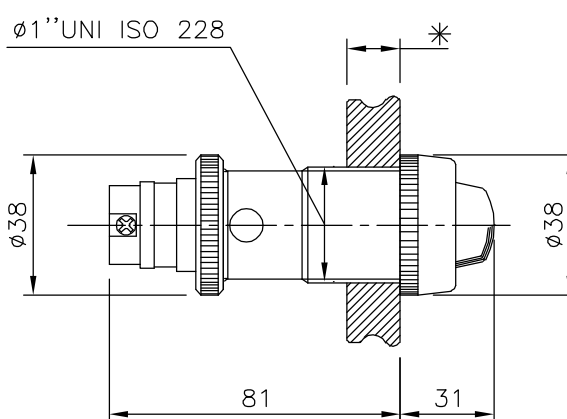
These units shall be installed on enclosure with volume up to 160,6 dm³ for group IIB+H₂ and up to 62,9 dm³ for group IIC.

These units may be mounted on electrical equipment suitable for group I-M2 (firedamp mines) if no component is made of light alloy. The resulting mode of protection will be Ex d I Mb.

(*) See page B11 for CCA and page B21 for enclosures CCF.
Remark: lamp is supplied on request.



DP
Threading 1/2" ISO 228
Lamp holder BA 9S
Power ≤ 2,5 W
Weight: 80 g



DFP
Threading 1" ISO 228
Lamp holder E14
Power ≤ 5 W
Weight: 210 g

Signaling Unit

Color	Id code
Red	R
Green	V
Yellow	G
White	B
Blue	A

Example: DP R

Order Coding

Type

DP = 1/2" Unit

DFP = 1" Unit

Lamp color (see table)

R = Red