

LIGHTING

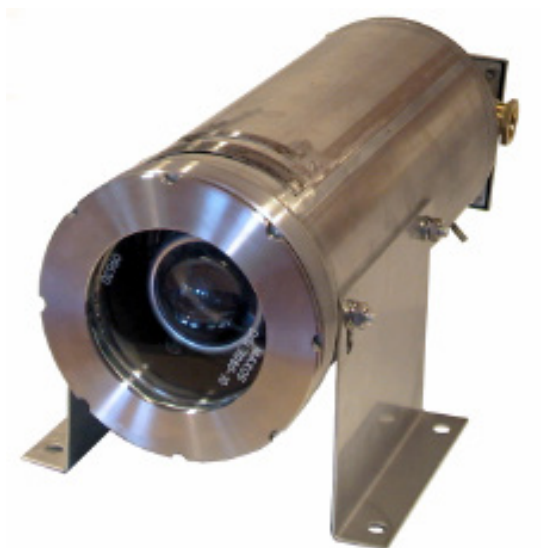
TEF 9964 XENON

HELIDECK FLOODLIGHT EEx de

ZONE 1, ZONE 2 & SAFE AREA

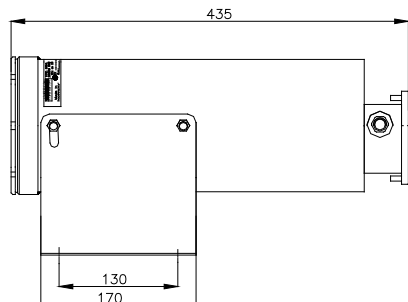
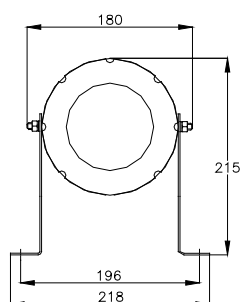
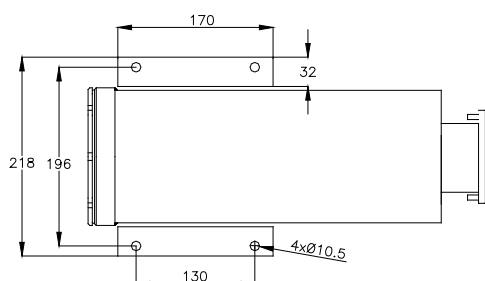
USER MANUAL

Subject to change without prior notice TUM1023 REV.F 03.11.2022



IMPORTANT

Read this instruction carefully before installing the product



996A105480

INTRODUCTION

Thank you for purchasing this product!
For installation, maintenance and assurance of a long life of this product, please follow this manual.

APPLICATIONS

- Floodlighting of helicopter landing areas
- For use in hazardous areas
- Floodlighting

CONTENT IN BOX

The product is fully assembled, and ready for installation.

SAFETY PRECAUTIONS

Note that changes made to the product and/or installation of components which do not conform to the approval, may be a safety violation. The manufacturer will in no circumstance be held responsible for such activity.
For your health and safety, always use safety gear suited for the task. Be certain to follow codes, regulations and/or specific procedures that are related to the installation.

TOOLS REQUIRED

Regular tools required for installation:

- 17 mm wrench –for assembling the floodlight.
- 13 mm wrench –for adjusting the angle of the light.
- 8 mm flat screwdriver –for open/closing the cover of the junction box.
- 3 mm flat screwdriver –for installing the cable in the terminal block.
- 5,5 mm flat screwdriver –for removing the lamp insert.
- 30 mm wrench -to tighten the lock nut and the pressure nut.
- Hook screw key size 155-165 –to open/closing the front ring.

MAINTENANCE INSTRUCTIONS

The luminaire should be inspected according to Company routines. The manufacturer suggests regular check for water intrusion/condensation which should be removed immediately. Check the drain plug / drain hole function.
When cleaning, use only mild detergents. Alcohol or petroleum based products may damage lens, paint or plastic components.

APPROVALS

Certificate No.: Nemko 00ATEX245
Complies with: EN 500014:1997 + A1:1999 + A2:1999
EN 50018:1994
EN 50019:1994

RUBBER SEAL

Cable diameter	Size	Part No.
11 - 15mm	Ø26,8/15,0x10mm	5002 0140
15 - 20mm	Ø26,8/20,3x10mm	5002 0139

Be sure to install the cable in a way which prevents water to penetrate into the enclosure through the cable gland, also make sure to use the correct rubber seal when you install the luminaire

INSTALLATION INSTRUCTIONS

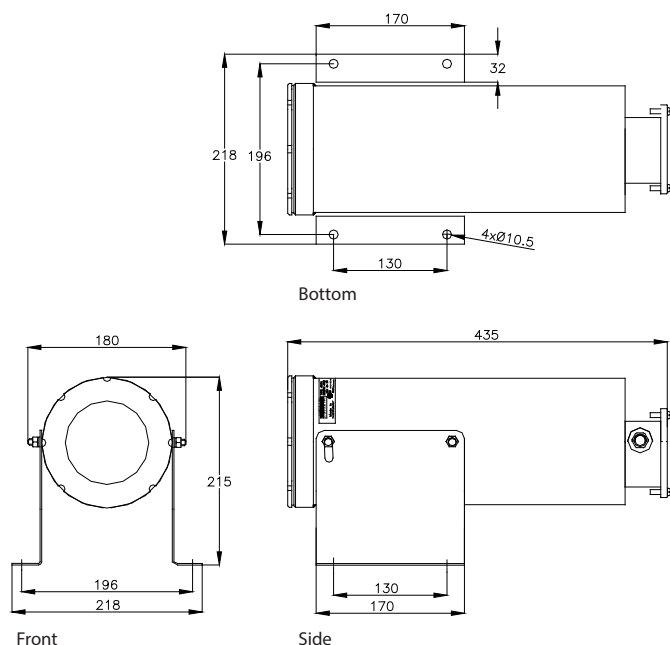
The floodlight should be installed according to the calculated light distribution plan. The glass in front should face the centre at the helideck, unless stated otherwise.

Secure the floodlight to the helideck by means of four M10 bolts.

Open the enclosure cover on rear. Replace cable gland gaskets as required to match the cable diameter. Unused cable glands should always be replaced with a blind plug.

Connect cables and replace the enclosure cover.

Exposed non-current carrying metal is to be bonded to ground by a minimum 14 AWG (2,5mm²) copper wire.



REPLACING XENON LIGHT BULB

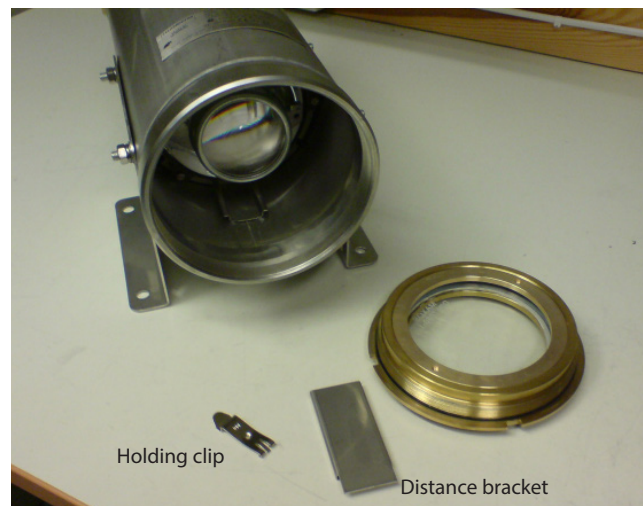
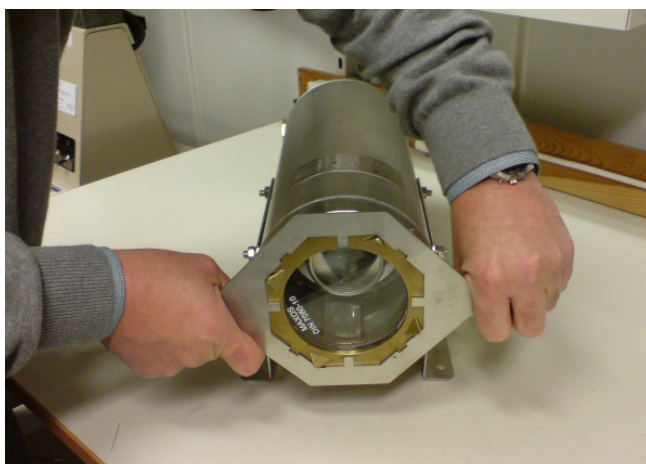


Warning ! High voltage components inside lamp. Make sure to disconnect power before opening.

Note: To be performed by Ex certified personnel only

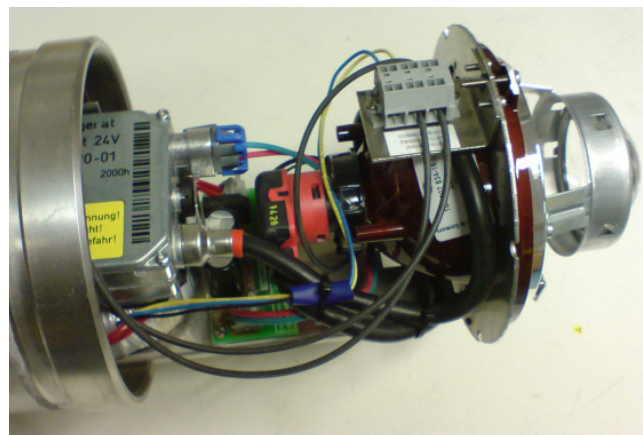
1. REMOVE FRONT RING

Use front ring tool to loosen/screw off front ring, anticlockwise.

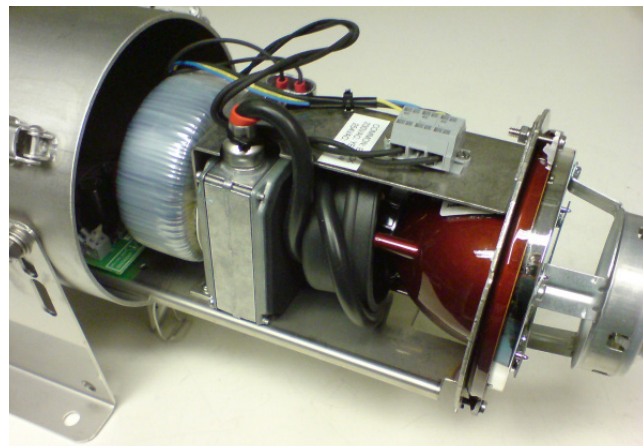


3. SLIDE OUT LAMP INSERT

Newer version:



Older version:

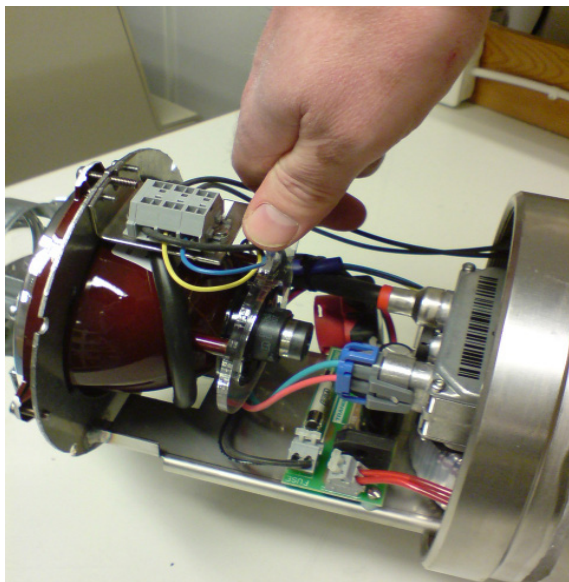


2. REMOVE HOLDING CLIP AND/OR DISTANCE BRACKET

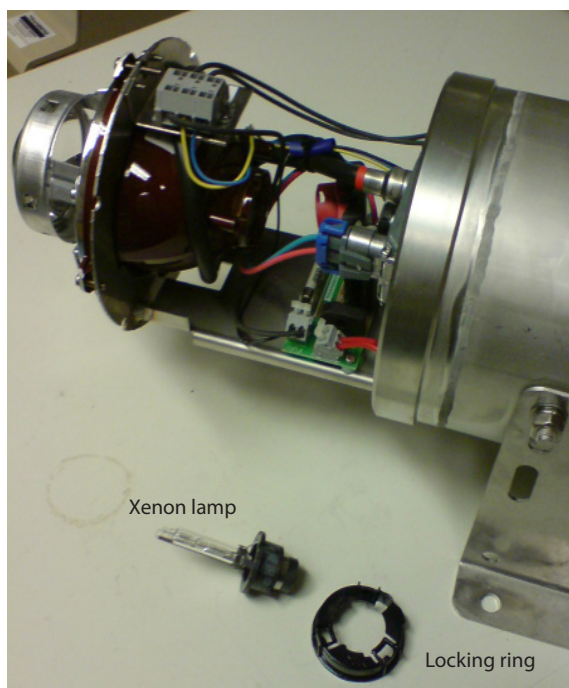


4A. REMOVE LIGHT BULB, NEW VERSION

4a-1:
Disconnect the high voltage plug from the light bulb.
Position lamp removal tool over locking ring as shown below. twist approx. 30 degrees anti-clockwise.

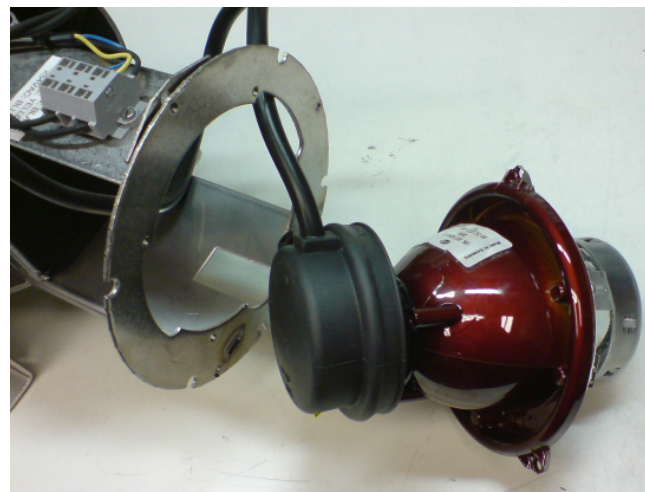


4a-2:
Remove xenon lamp



4B. REMOVE LIGHT BULB, OLD VERSION

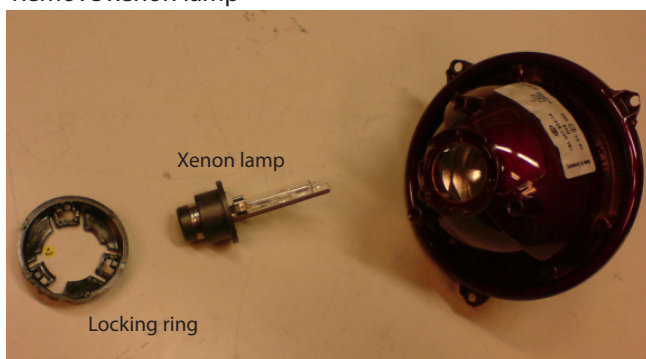
4b-1:
Disassemble the reflector unit. 3 x M4 screws
Disconnect the high voltage plug.



4b-2:
Position lamp removal tool over locking ring as shown below. Twist approx. 30 degrees anti-clockwise.



4b-3:
Remove xenon lamp



5. INSERT NEW XENON BULB

Note: make sure the new xenon bulb is clean. Do not touch the glass part of the bulb.
Mount lamp back together in reversed order.

TEF 9964 XENON HELIDECK FLOODLIGHT EEx de USER MANUAL

SPARE PARTS

	Part No.
Xenon Lamp, D2S. 35W, For TEF 9964	9400074
Front Glass	3120
High Voltage Igniter Unit Xenon	9400103
Locknut for Xenon D2S	9400108
Transformer W/ Mounting Bracket for 9964, 230/254 VAC	4386
Transformer W/ Mounting Bracket for 9964, 110 VAC	4387
Rectifier For 9964 Xenon Helideck Light	3069
Cable Gland Exe E204/622 M25/D kit 11,0-20,1 mm/9mm	6222502
Complete Insert for TEF 9964 230/254V	3173
Complete Insert for TEF 9964 110V	3249
Complete Insert for TEF 9964 24V	4210
Tool for Replacing Xenon Lamp in TEF 9964 Helideck Floodlight	4676
Tool for Helideck Lights	4627
Reflector unit 9964 CW 35W D2S Xenon bulb	4861

TECHNICAL DATA

Material:	Acid proof stainless steel. Safety glass
Input voltage:	254V AC 50/60Hz 230V AC 50/60Hz 110V AC 50/60Hz
Power consumption:	50Watt
IP-rating:	IP 66/67 (according to EN 60529)
Cable glands:	M25, Increased safety, EEx`E`II
T _{AMB} :	ATEX: -20°C to +40°C
Area of use:	Zone 1, Zone 2 and safe area
Weight:	11,5 kg.